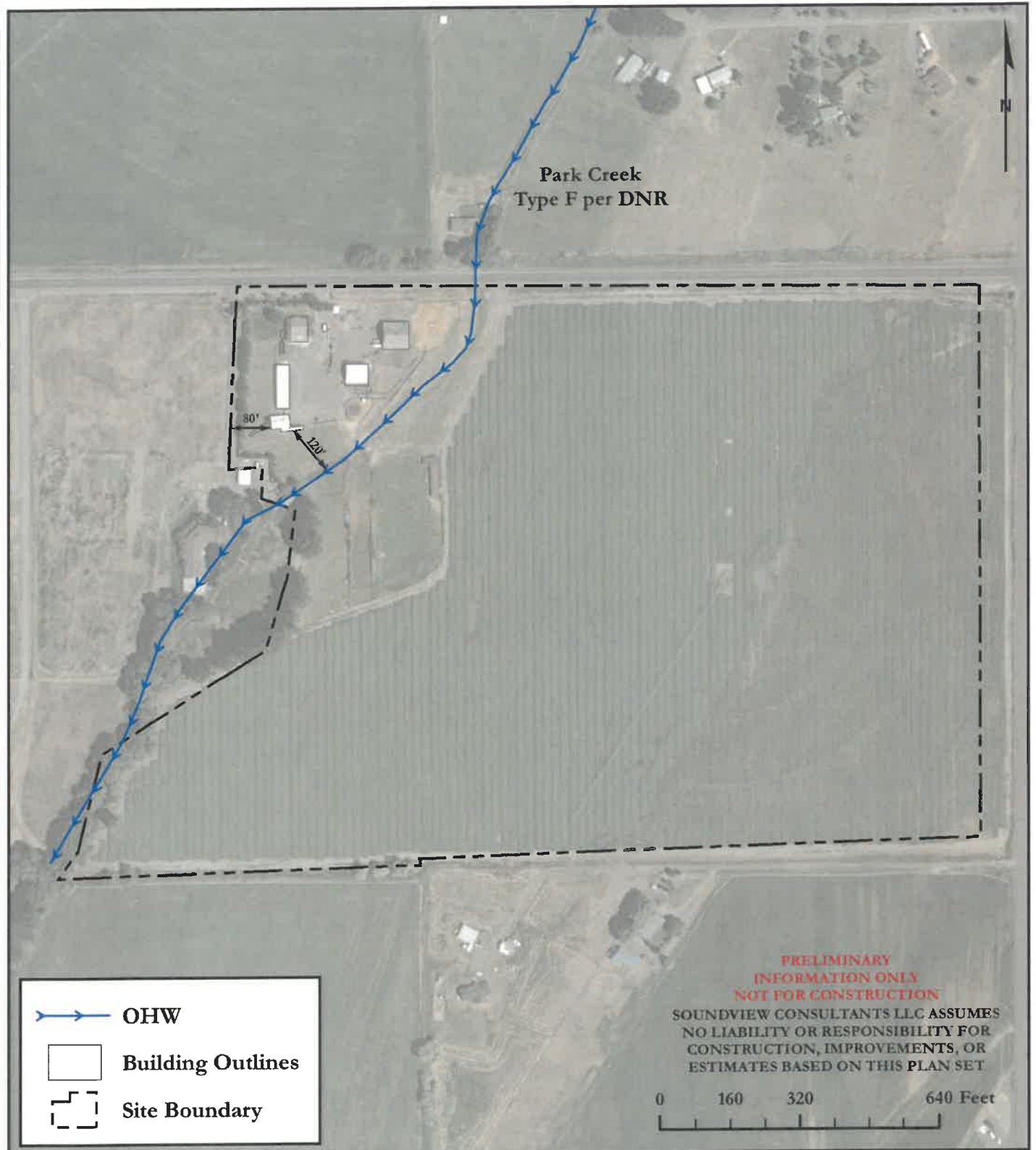


Attachment A – Existing and Proposed Site Plans

KITITAS COUNTY
RECEIVED
11/03/2023

EXISTING CONDITIONS (FULL PARCEL)



Soundview Consultants LLC
Environmental Assessment • Planning • Land Use Solutions

2907 Harborview Dr., Suite D, Gig Harbor, WA 98335
Phone: (253) 514-8952 Fax: (253) 514-8954
www.soundviewconsultants.com

VANTAGE HIGHWAY

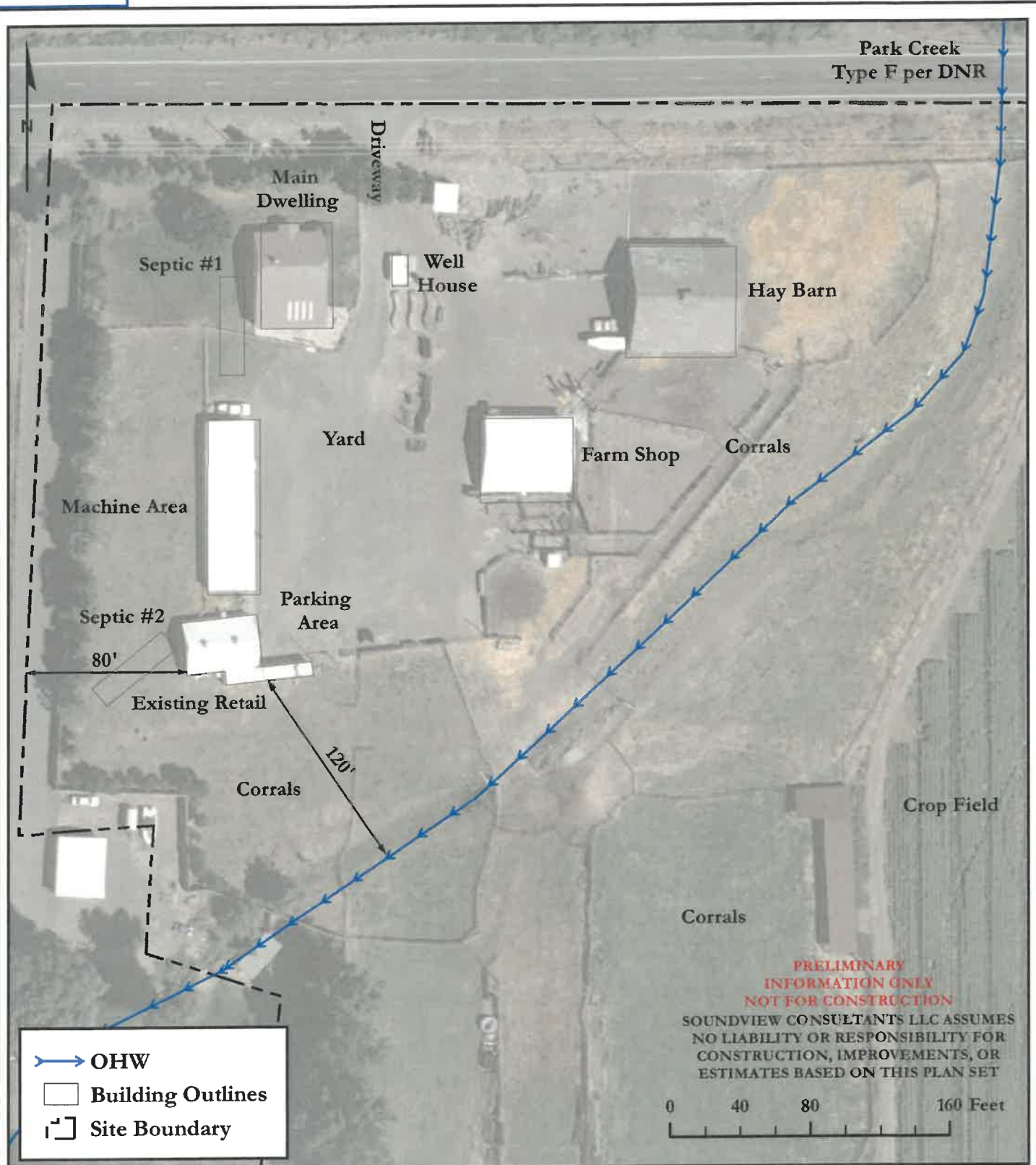
15450 VANTAGE HWY
ELLENSBURG, WA 98926

KITITAS COUNTY PARCEL NUMBER:
280236

DATE: 10/30/2023
JOB: 2619.0001
BY: DDS
SCALE: 1" = 320'
FIGURE NO. 1 of 3

KITTITAS COUNTY
RECEIVED
 11/03/2023

EXISTING CONDITIONS (DETAIL)



OHW
 Building Outlines
 Site Boundary

**PRELIMINARY
 INFORMATION ONLY
 NOT FOR CONSTRUCTION**
 SOUNDVIEW CONSULTANTS LLC ASSUMES
 NO LIABILITY OR RESPONSIBILITY FOR
 CONSTRUCTION, IMPROVEMENTS, OR
 ESTIMATES BASED ON THIS PLAN SET

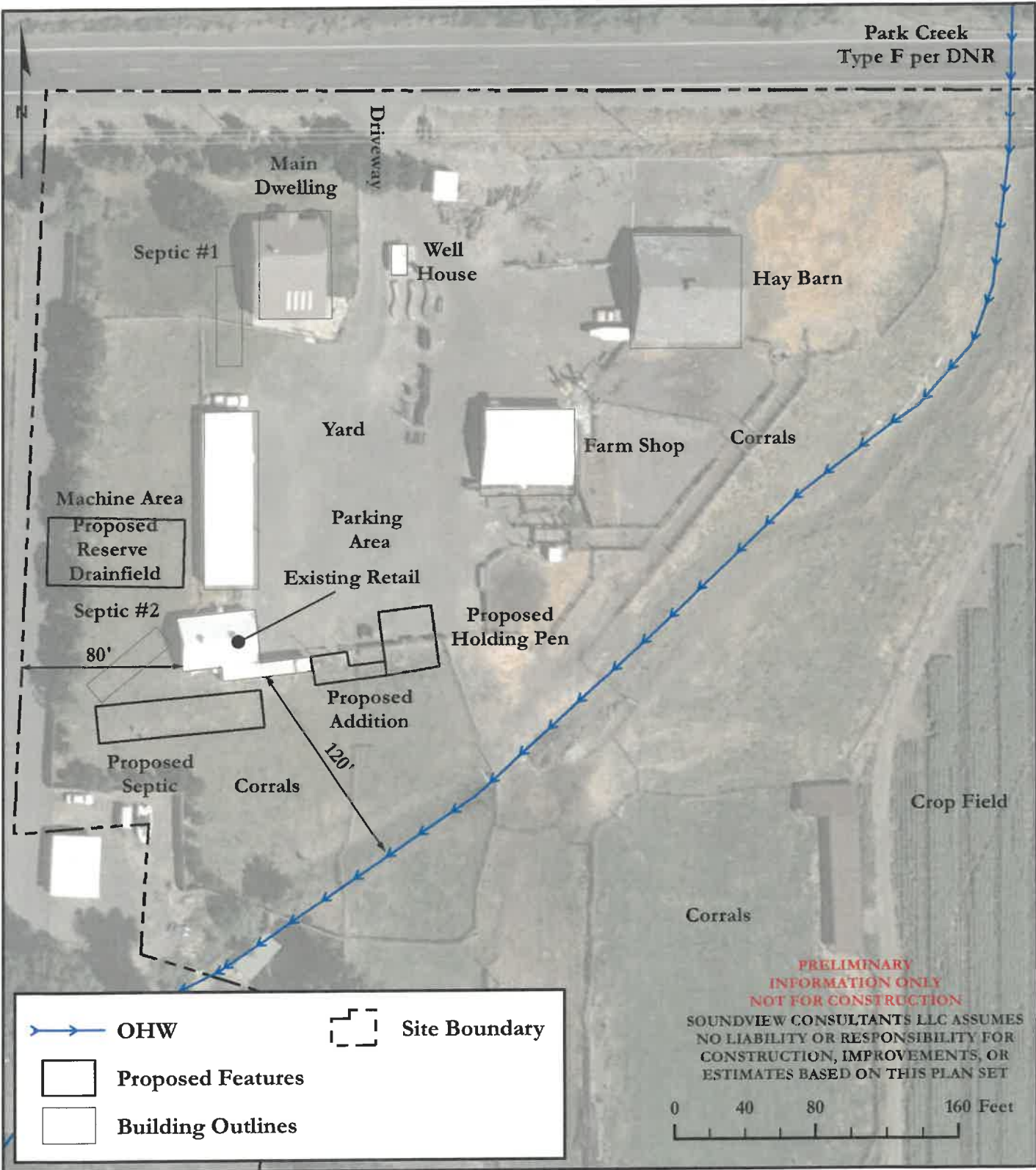
0 40 80 160 Feet



Soundview Consultants LLC
 Environmental Assessment • Planning • Land Use Solutions
 2907 Harborview Dr., Suite D, Gig Harbor, WA 98335
 Phone: (253) 514-8952 Fax: (253) 514-8954
 www.soundviewconsultants.com

VANTAGE HIGHWAY
 15450 VANTAGE HWY
 ELLENSBURG, WA 98926
 KITTITAS COUNTY PARCEL NUMBER:
 280236

DATE: 10/30/2023
JOB: 2619.0001
BY: DDS
SCALE: 1" = 80'
FIGURE NO. 2 of 3




Soundview Consultants LLC
Environmental Assessment • Planning • Land Use Solutions
2907 Harborview Dr., Suite D, Gig Harbor, WA 98335
Phone: (253) 514-8952 Fax: (253) 514-8954
www.soundviewconsultants.com

VANTAGE HIGHWAY
15450 VANTAGE HWY
ELLENSBURG, WA 98926
KITITAS COUNTY PARCEL NUMBER:
280236

DATE: 10/30/2023
JOB: 2619.0001
BY: DDS
SCALE: 1" = 80'
FIGURE NO. 3 of 3